

INDUSTRIAL / WAREHOUSE SIMPLIFYING COMPLEX ISSUES.



The complexity of modern day industrial equipment has directly lead to an increased demand for improved facility infrastructure. Considering environmental controls in clean room applications, robotic/automation equipment, and merging foreign standards with typical US electrical distribution systems are just a portion of the challenges faced by a design team today. FXB's engineering team has created a proven design process which accounts for these challenges as well as the unique operational/staging aspects of each facility. This approach leads to customized, yet easy to implement, solutions that support the specific objectives and future expansion efforts of our partners.

FEATURED PROJECT



NEW HUDSON FACADES LINWOOD, PA

MEP engineering & FA performance design for the new construction of a 172,000 SF manufacturing & office building. 146,000 SF manufacturing/warehouse space. Two story, 26,000 SF office space. 2,500 amp, 480/277 volt service. 400kW backup generator. New Hudson Facades specializes in the design, manufacturing, & installation of facades on world class buildings.



INDUSTRIAL / WAREHOUSE PROJECT SNAPSHOT

ABF Trucking
Advance Pierre Foods
Alan Envelope
Amazon.com
American Food Service
Air Liquide
Aronimink Maintenance Facility
AstraZeneca
B&M Meats
BAAR Products
Ball Corporation
Belfor Restoration
Branch Medical Group
Brandywine Coachworks
Brookside Labs
Cantlin Mercedes Service Center
Cavallo Auto Body
CD Diagnostics
Centocor Pharmaceutical
Certainteed Service Center
City Harvest
Claymont Steel
Communications Test Design Inc.
Concord Auto Body Shop
Corning Incorporated
Cott Beverage
DAF Greenwood
DE State University Lab
Dermik Laboratories Inc.
DuPont
Eastern Warehouse Distributors
Elwyn Laundry Facility
Enterprise Paper Company
Epsilon Products

Estee Lauder
G.R.O.W.S Landfill
Gehr Plastics
GlaxoSmithKline Biologicals
Global Pharmaceutical
Good Year Tire
Gore Labs
Graco Children Products
Granite Run Chevy
Great Atlantic Graphics
Grundy Industrial
Hospira Pharmaceutical
Hypex Packaging Technologies
I & i Sling
Iron Mountain
JLA International
Johnson Controls
Keystone Foods
Krando Metal Products
Longwood Gardens
Lukens Steel
Merrill Lynch
Monet Graphics
Nabisco Good Production
New Hudson Facade
New Sensor
Northside Packing
Ortho Pharmaceutical
Oxicool
Pierce Aluminum
QS Pharma
Quest Diagnostics
Raymour & Flanigan
Reilly Foam Corporation

RE Steel
Resawn Timber Company
Rowlins Printing
S. Walter Paper Company
Sanofi Pasteur
Sims Hugo Neu Corp
Sun Oil Company
Swarthmore College BioLab
Tavo Packaging
The Iron Shop
Turn 5
Tritech Printing
Truck Smart Service Garage
Tyson Foods
United Tire
US ARMY Garage
Waste Management Services
Wawa Dairy
Weber Display & Packaging
Winner Ford & VW Garage
Whitford Products
Wilmington Chemical Corp.
Wyeth Lab

INDUSTRY EXPERTISE

Industrial / Warehouse Facilities

Facility types Include:

- Manufacturing Plants
- Food Processing Plants
- Refrigerated Warehouses
- Pharmaceutical Facilities
- Warehouses & Distribution Centers
- Laboratories / Clean Rooms
- Recycling Centers
- Hazardous/Chemical Storage Facilities

What we do:

- Feasibility/Energy Studies
- New Construction
- Expansions / Renovations/Enhancements
- Short Circuit/Coordination/Arc Flash Studies
- Thermal Imaging
- Electrical Safety Programs
- Standard Operating/Maintenance Procedures
- Commissioning & Retro Commissioning
- Chiller Plant & Boiler Plant Design/Replacement
- Substation Design
- Hazardous Assessment



RAYMOUR & FLANIGAN FACILITY

MONTEBELLO, NY

MEP | FA design for the new construction of a 10,000 SF truck maintenance facility and a 25,000 SF recycling facility.



RAYMOUR & FLANIGAN WAREHOUSE & DISTRIBUTION CENTER

ELIZABETH, NJ

MEP | FA design for conversion of a vacant 155,000 SF sports facility to a 109,000 SF warehouse/distribution center and 45,000 SF retail showroom. Project includes complete electrical service & distribution system replacement. Project is in design stage with construction scheduled to begin 2nd quarter of 2018.



RAYMOUR & FLANIGAN

GIBBSTOWN, NJ

MEP | FA design for the 200,000 SF warehouse addition to an existing 500,000 SF warehouse & distribution center. Project is in the design stage with construction scheduled to begin 3rd quarter of 2018.

RAYMOUR & FLANIGAN

RANDOLPH, NJ

MEP design for code analysis and ventilation enhancements to a 165,000 SF warehouse & distribution center. Construction to be completed in the 1st quarter 2018.

2 TABAS LANE REPAIR CENTER

EXTON, PA

Electrical design for the conversion of an existing warehouse into a new repair center.



RE STEEL

EDDYSTONE, PA

Electrical enhancements including main service transformer and switchgear replacement.



DERMIK LABORATORIES, INC

TREDYFFRIN, PA

Electrical and mechanical design for new 1,000 kW generator. Electrical design for renovations to the 3rd floor.



GLAXOSMITHKLINE BIOLOGICALS

MARIETTA, PA

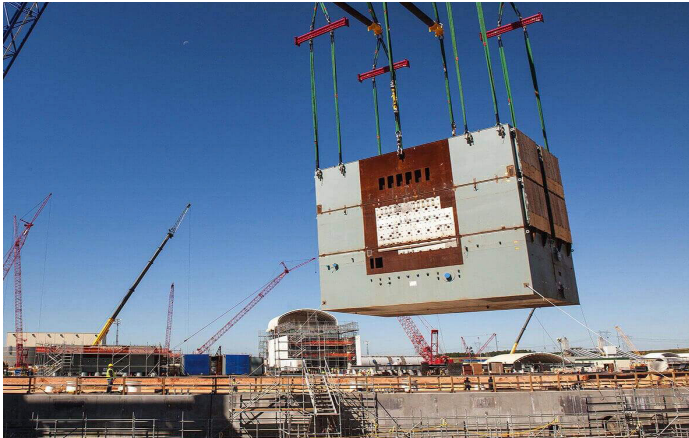
Owners Electrical Consulting Engineer for several projects, including a new 69kV-12.47kV substation project consisting of two 69kV services from PPL, 2-26MVA power transformers, and double ended 12.47kV switchgear lineup with main-tie-main and auto throwover located in a power distribution center.



I&I SLING INC.

ASTON, PA

MEP design for renovations to a 48,000 SF production facility.



AIR LIQUIDE

MORRISVILLE & PLUMSTEADVILLE, PA

Mechanical and electrical code analysis and feasibility studies.

CERTAINTED SERVICE CENTER

BERLIN, NJ AND KULPSVILLE, PA

MEP design for alterations to a warehouse and tenant fit-out.



NABISCO GOOD PRODUCTION FACILITY

PHILADELPHIA, PA

MEP | FA design for a 135,000 SF shell space.



TAVO PACKAGING, INC.

FAIRLESS HILLS, PA

Power System Study and transformer testing.

UNITED TIRE CENTER

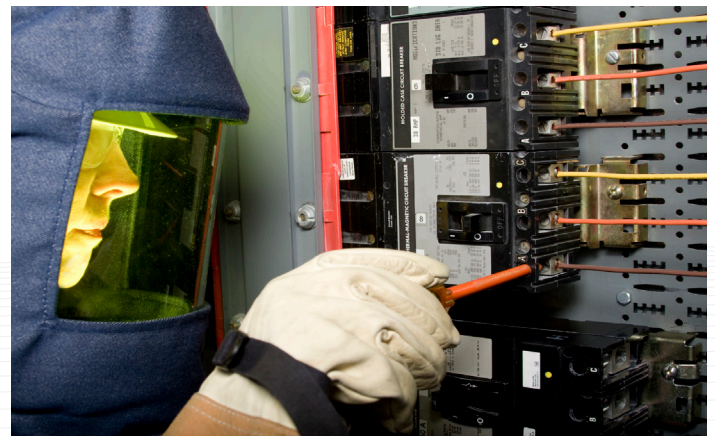
WILMINGTON, DE

MEP design for the new construction of a warehouse/retail/office building.

ADVANCE PIERRE FOOD / TYSON FOODS

VINELAND, NJ

Electrical service upgrade consisting of new utility transformer, secondary duct bank and 4,000 amp main distribution switchboard. Project included short circuit, coordination and arc flash studies and ventilation system enhancements.





IRON MOUNTAIN RESEARCH MANAGEMENT

Electrical engineering & fire alarm design for numerous warehouses throughout the United States ranging from 30,000 SF to over 1 million SF. Electrical engineering for several new shredder facilities and M/E engineering for several vault facilities.

WAWA DAIRY

MEDIA, PA

Electrical engineering for new substation and primary underground distribution system for the campus. Electrical engineering for a new 65,000 SF refrigerated warehouse and automated storage retrieval system. Feasibility study for electrical infrastructure upgrades and for campus backup generator protection.



JOHNSON CONTROLS

MIDDLETOWN, DE

MEP design of a new 424,000 SF manufacturing & office building.



RAYMOUR & FLANIGAN WAREHOUSE & DISTRIBUTION CENTER

LAWRENCE, NY

MEP | FA design for conversion of an existing 110,000 SF vacant building to a 84,100 SF warehouse/distribution center and 25,000 SF office space. This was a fast track design/build project. Design & construction was completed in 2017.



KRANDO METAL PRODUCTS

BROOMALL, PA

Electrical design for the renovation of the electrical infrastructure.

DAF GREENWOOD

AVENEL, NJ

MEP design services for the addition of a new production line and MEP renovation of two existing production lines. Design included a chilled water system.



REILLY FOAM CORPORATION

KING OF PRUSSIA, PA

MEP | FP | FA design for the fit-out of a 125,000 SF light manufacturing & warehouse facility. Construction to begin 1st quarter of 2018.



CITY HARVEST

LONG ISLAND CITY, NY

MEP design for the warehouse/office space.



FAIRLESS LANDFILL

FALLS TOWNSHIP, PA

Short circuit, coordination and arc flash study for entire facility. Project included 34.5kV HT service, (8) section 34.5kV switchgear lineup, (4) 34.5kV-480/277 volt transformers and (2) 34.5kV-4.16kV transformers. Study will be completed 1st quarter of 2018.

WEBER DISPLAY & PACKAGING

PHILADELPHIA, PA

Replacement of existing end of life, 2 phase electrical service with new 1600 amp, 480/277 volt, 3 phase, 4 wire service. Electrical distribution to owner's production equipment.



RESAWN TIMBER COMPANY

TELFORD, PA

Electrical renovations to office and production facility.

TURN 5 FLEX SPACE

NORRISTOWN, PA

MEP renovations to the 40,000 SF warehouse & office space. Project included a new electrical service & distribution system.

OXICOOL

MALVERN, PA

Electrical distribution to owner's production equipment.